

trust.

FRONT SUSPENSION

OWNER'S GUIDE

CONTENTS

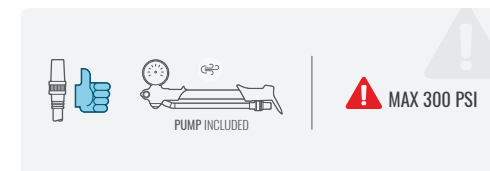
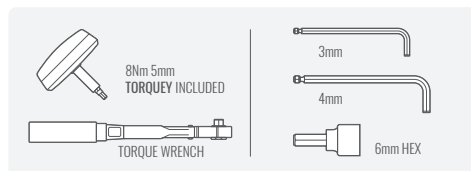
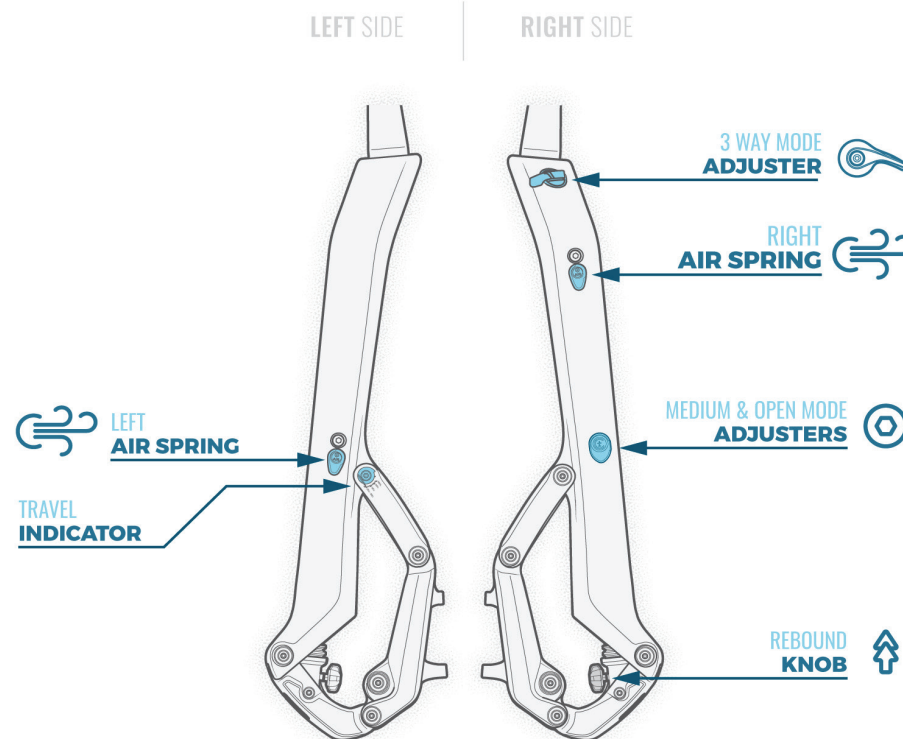
WELCOME	(PG 01, 02)
WARNINGS	(PG 03-06)
VISUAL INSPECTION	(PG 07, 08)
INSTALLATION	(PG 09-14)
MAINTENANCE AND SETUP	(PG 15-22)
WARRANTY	(PG 23-26)
DEUTSCHE	(PG 27-34)
FRANÇAIS	(PG 35-42)
ESPAÑOL	(PG 43-50)
ITALIANE	(PG 51-58)
PORTUGUESAS	(PG 59-66)
中文	(PG 67-72)
日本語	(PG 73-80)

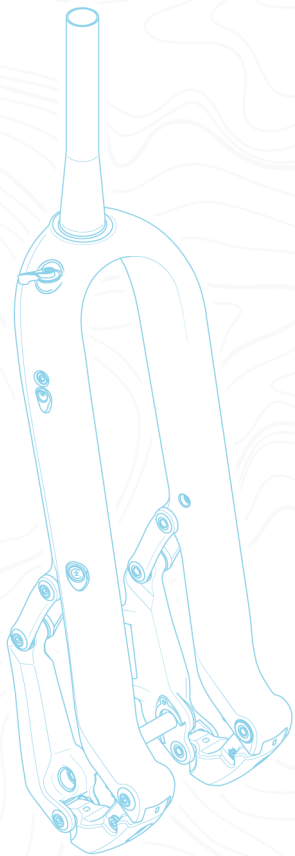
Deutsche Anleitung | Instructions en Français | Instrucciones en Español | Istruzioni Italiane | Instruções Portuguesas | 中文说明 | 日本語の説明



FOR ADDITIONAL INFORMATION, VISIT: [TRUSTPERFORMANCE.COM/OWNERS-MANUALS](https://trustperformance.com/owners-manuals)

CONTROLS





HELLO

Thanks for choosing Trust Performance suspension! If you are like us, then you work hard to get out on the trail every free moment you have. We have made our products to help you make the most of those moments - all fun and no distractions. But, before you get out and ride, read this document in its entirety to ensure you have a safe ride and get the most out of your gear.

LIFE IS ABOUT THE **MOMENTS** YOU CREATE

RIDE SAFELY AND WITHIN YOUR LIMITS



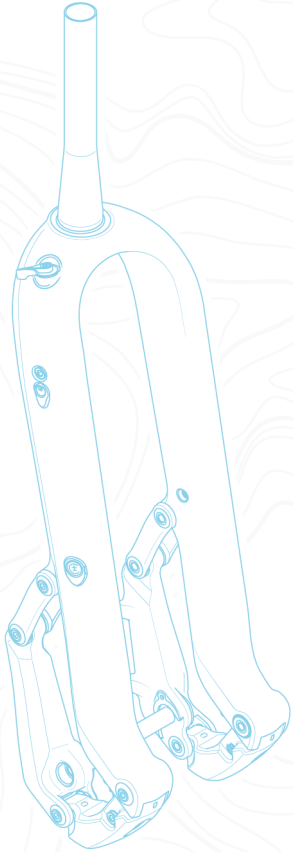
Please visit our website WWW.TRUSTPERFORMANCE.COM/OWNERS-MANUALS for setup videos, photos, tuning information and more.

If you have any questions about something in this manual, please contact us or visit your local Trust Performance bicycle retailer in your area.

Trust Performance Authorized Service Centers are locations that have undergone

specialized training to maintain your Trust product. Contact us to find a location near you.

If you have not already registered your product, visit TRUSTPERFORMANCE.COM/REGISTER to register your product and join our lifetime bearing and no-fault crash replacement programs. If something goes wrong, we are here to help get you back on the bike as soon as possible.



WARNINGS

WARNINGS

- Riding a bike is inherently dangerous. Not properly maintaining or inspecting your bike and its components is even more dangerous and may result in serious injury or death.
- Specialized tools, supplies, and knowledge are required to install your front suspension. Your Trust Performance product should only be installed by a qualified mechanic. Contact Trust Performance for help locating a qualified mechanic or Trust Performance Authorized Service Center.
- Do not modify the product outside of these instructions as it may cause serious injury, death and/or void the limited warranty.
- All bicycle products have a finite lifespan. How you ride, store, and maintain your Trust Performance product will impact that lifespan. Inspect your Trust Performance suspension and all other riding equipment before each ride according to the manufacturers' instructions. If there are any signs of fatigue, wear or damage on any component part, do not ride until it can be inspected and/or replaced.
- Trust Performance suspension is designed for use on single passenger, non-motorized mountain bikes, and electric mountain bikes with 250W or less maximum power output, with a ready to ride weight of less than 30kg, and a maximum speed of 40kph – it is intended for All Mountain and XC Riding (see “Intended Use” section below for further details).
- If the steerer tube has any nicks or gouges that can be felt with your fingernail, the crown/steerer tube assembly must be replaced. A nick or gouge can cause the steerer tube to fail, resulting in a loss of control of the bicycle, serious injury and/or death. Use only Trust Performance recommended replacement parts for servicing your front suspension.
- Use only Trust Performance Authorized Service Centers for servicing your Trust Performance front suspension. Improper maintenance can void your warranty and/or cause the front suspension to malfunction causing serious injury or death.
- Always clean all surfaces when adjusting or installing your Trust Performance front suspension, or products that interface with your front suspension, to avoid contamination of interfaces, as this can cause malfunction, serious injury and/or death.
- Suspensions contain air and fluids under pressure. Do not open or disassemble any part of the Trust Performance front suspension.
- Always wear a helmet when riding. If your riding style, ability or conditions dictate, wear additional protective gear. Ride courteously and always follow the rules of your riding area.
- Verify that your Trust Performance front suspension and front suspension setup are appropriate for your frame, size, riding style, and riding conditions. Failure to consider these factors may change the characteristics of your bike making it unsafe.

WARNINGS (cont.)

- Sag indicator, air pressure charts, and damper setup suggestions are provided for reference only. Always check to confirm at least 6mm of tire clearance with your frame and front suspension through the full compression distance to verify safe use.
- Your bike is a sum of its parts. Understand how they work together and ensure they are appropriately assembled.
- This manual is not a comprehensive guide for bicycle assembly, maintenance or riding.
- Trust suspension does not come with lights or reflectors which should be used for on-road, bike path or urban riding conditions where others need to see you.
- Do not use Trust Performance suspension products on any vehicle carrying more than one operator or rider, such as a tandem bicycle or heavy utility bicycle.
- As dirt and debris can accumulate between the fork axle openings, always check and clean these areas before installing the wheel. Improper hub and axle installation can result in serious injury or death.
- NOTICE: A dirty pump or valve end can result in contamination, damage, and air loss. Make sure pump and valve are clean before attachment.
- Trust Performance suspension uses ball bearing and journal bearing pivots. If you experience binding or anything other than

free movement in your pivots, stop use of the product immediately and consult a trained professional. Damaged pivots might result in a loss of control of the bicycle, severe injury and/or death.

- Trust Performance suspension uses proprietary pivot fixing pins for its suspension pivots. The pivot fixing pins are intended to add an extra level of pivot retention security. Never ride your Trust Performance suspension without the pivot fixing pins properly installed. Not using the pivot fixing pins could result in a pivot failing, which might cause the wheel to jam or a loss of control of the bicycle, severe injury and/or death.

- Failure to torque pivot and shock bolts to the 8Nm specification could lead to the separation of suspension components during riding, resulting in a loss of control of the bicycle, severe injury and/or death.

- Trust Performance suspension uses suspension pivots, which connect linkages to each other, and shock/spring pivots, which connect shocks and springs to linkages or legs. The maintenance procedure for suspension pivots and shock/spring pivots differs. Failure to follow the appropriate guidelines for each pivot style may result in a pivot failing, which might cause the wheel to jam or a loss of control of the bicycle, severe injury and/or death.

- Remove protective film from product before riding.

INTENDED USE

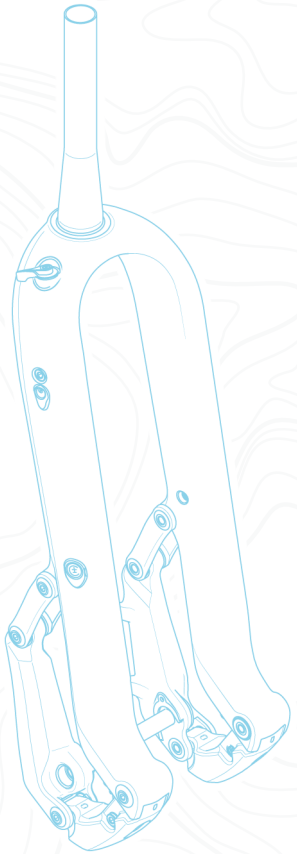
Your Trust Performance front suspension is intended for All Mountain and XC Riding, or ASTM Condition 4.

CONDITION	DESCRIPTION	SAMPLE MODELS
<p>ASMTM F2043</p> <p>1 SUITABLE FOR ROAD RIDING (ONLY)</p>	THIS IS A SET OF CONDITIONS FOR THE OPERATION OF A BICYCLE ON A REGULAR PAVED SURFACE WHERE THE TIRES ARE INTENDED TO MAINTAIN GROUND CONTACT.	
<p>ASMTM F2043</p> <p>2 FOR ON AND OFF-ROAD RIDING AND DROPS LESS THAN 15CM (6")</p>	THIS IS A SET OF CONDITIONS FOR THE OPERATION OF A BICYCLE THAT INCLUDES CONDITION 1 AS WELL AS UNPAVED AND GRAVEL ROADS AND TRAILS WITH MODERATE GRADES. IN THIS SET OF CONDITIONS, CONTACT WITH IRREGULAR TERRAIN AND LOSS OF TIRE CONTACT WITH THE GROUND MAY OCCUR. DROPS ARE INTENDED TO BE LIMITED TO 15CM (6") OR LESS.	
<p>ASMTM F2043</p> <p>3 FOR ROUGH OFF-ROAD RIDING AND JUMPS LESS THAN 61CM (24")</p>	THIS IS A SET OF CONDITIONS FOR OPERATION OF A BICYCLE THAT INCLUDES CONDITION 1 AND CONDITION 2 AS WELL AS ROUGH TRAILS, ROUGH UNPAVED ROADS, AND ROUGH TERRAIN AND UNIMPROVED TRAILS THAT REQUIRE TECHNICAL SKILLS. JUMPS AND DROPS ARE INTENDED TO BE LESS THAN 61CM (24").	
<p>ASMTM F2043</p> <p>4 FOR ROUGH OFF-ROAD RIDING AND JUMPS LESS THAN 122CM (48")</p>	THIS IS A SET OF CONDITIONS FOR OPERATION OF A BICYCLE THAT INCLUDES CONDITIONS 1, 2, AND 3, OR DOWNHILL GRADES ON ROUGH TRAILS AT SPEEDS LESS THAN 40 KM/H (25 MPH), OR BOTH. JUMPS ARE INTENDED TO BE LESS THAN 122CM (48").	
<p>ASMTM F2043</p> <p>5 FOR EXTREME RIDING</p>	THIS IS A SET OF CONDITIONS FOR OPERATION OF A BICYCLE THAT INCLUDES CONDITIONS 1, 2, 3, AND 4; EXTREME JUMPING; OR DOWNHILL GRADES ON ROUGH TRAILS AT SPEEDS IN EXCESS OF 40 KM/H (25 MPH); OR A COMBINATION THEREOF.	



[! Failure to follow these warnings may cause serious injury, death or damage to your Trust Performance suspension. !]

[WARNING: Use the right tool for the job! Verify your Trust Performance product's intended use matches your riding style, trail conditions, and the bicycle/frameset itself. Consult your local bicycle dealer or Trust Performance with any questions.]

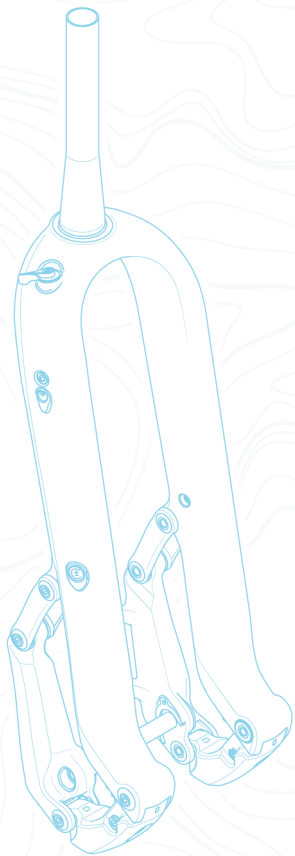


VISUAL INSPECTION

VISUAL INSPECTION

! [Before every ride, ensure your Trust Performance front suspension is in safe riding condition by evaluating the following checklist. If any item does not pass the checklist, seek professional advice from a professional mechanic or Trust Performance Authorized Service Center.]

- The front suspension is free of dents, cracks, blemishes and bends.
- The damper is not leaking oil.
- The wheels are centered and will not contact the front suspension and the brakes do not rub the brake pads.
- The axle is tightened to the correct torque specification.
- Bearings and pivot retention pins are in place.
- While compressing the front suspension throughout its full travel, verify that the suspension settings including sag percentage and damper settings are appropriate for your weight and riding style
- The rest of the bike is properly adjusted and functioning to the manufacturers' specifications.



FRONT SUSPENSION

INSTALLATION

FRONT SUSPENSION INSTALLATION

⚠ [WARNING: Trust Performance products should be installed by a professional mechanic in accordance with Trust procedures and specifications. Improperly installed or maintained front suspensions may lead to serious injury or death.]

⚠ [WARNING: Always wear appropriate personal protection when working with carbon fiber including a respirator, eye protection, and gloves.]

STEERER TUBE PREPARATION

1. Inspect for nicks or gouges.
2. Do not cut threads into the steerer.
3. Never allow cable or cable housing to contact steerer tube. Contact your frame manufacturer if you have internal housing that does not meet this guideline.
4. Do not cut the steerer tube more than 3mm below the uppermost installed part.
5. Do not use a star-fangled nut. Use only the supplied compression nut.

FRONT SUSPENSION REPLACEMENT

1. Remove the existing front suspension from the bicycle. Measure the steerer tube length of the old fork, and transfer this measurement to your new Trust Performance front suspension's steerer tube. If you do not have an existing fork, measure the headset stack height (headset parts and frame steerer tube) and refer to your stem manufacturer's instructions to be sure that there will be enough clamping surface for the stem.

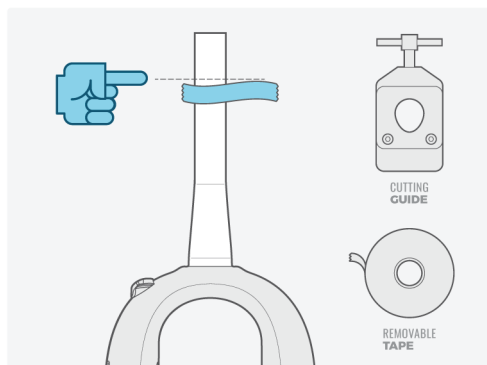
2. Pre-assemble the stem, fork, headset and spacers on the bicycle following manufacturers' instructions for each component. Using a permanent marker, mark the cut location of the steerer tube from the bottom of the crown race to 7-8mm above

top of the stem. [WARNING: Never use more than 30mm of spacers below the stem and always use a 10mm spacer above the head tube. Failure to use a 10mm spacer above the stem and failure to retain 7-8mm of steerer tube above the stem may lead to fork failure, serious injury and/or death.]

3. Apply masking tape at the cut location and mark the cut line. Cut the steerer tube using a hacksaw with a blade designed for cutting carbon fiber and a cutting guide to ensure an accurate and straight cut. Smooth the cut area with 200 grit sand paper.

FRONT SUSPENSION INSTALLATION

FRONT SUSPENSION REPLACEMENT (Cont.)



4. Press the crown race onto your new front suspension following your headset manufacturer's instructions.

5. Install the front suspension into the frame and the stem onto the steerer tube. Install the headset compression device.

⚠ [WARNING: Do not use a "star nut".]

6. Adjust and tighten the stem and headset according to the manufacturers' instructions.

MOUNTING DISC BRAKES

1. **⚠ [Warning: The Trust Performance front suspension has a post mount for rotor size 180mm, and is designed for a maximum rotor size of 203mm. If you want to use a rotor that is larger than 180mm, you must use the proper brake adapter as recommended by your brake manufacturer. Failure to follow these instructions may lead to fork failure, serious injury and/or death.]**

2. **⚠ [WARNING: Follow brake manufacturer's specifications, including but not limited to thread engagement depth and torque. Failure to follow those instructions may lead to fork failure, serious injury and/or death.]**

3. **⚠ [WARNING: Ensure the brake line does not negatively impact the front suspension's ability to move throughout its travel, or steering range.]**

4. Use the included guides to route the brake cable/housing away from moving parts to the brake lever. If included guides are lost or not available, a 4mm zip tie can be used in their place. Never ride without your brake line or housing secured.

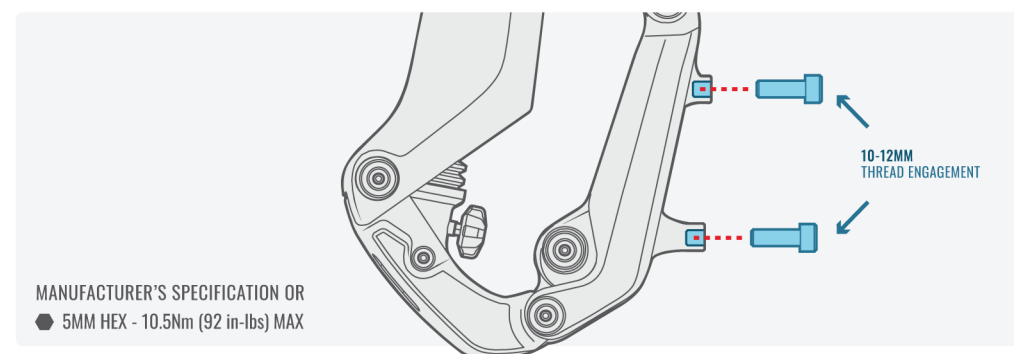
5. Route your front brake line starting at the caliper, away from the tire, towards the outside of the fork leg, to the provided cable guides. Never route your brake line between the tire and leg frame.

6. **⚠ [WARNING: Routing the brake line between the tire and leg frame could cause the tire to catch on the brake line during use, which can cause a loss of braking or the tire to jam, resulting in serious injury and/or death.]**

FRONT SUSPENSION INSTALLATION

MOUNTING DISC BRAKES

7. **⚠ [WARNING: The disc brake caliper mounting bolts must have 10-12mm of thread engagement with the wheel carrier. Use a torque wrench to tighten the caliper mounting bolts to the disc brake manufacturer's specification, but do not exceed 10.5Nm (92 in-lbs). Improper installation can lead to brake failure, resulting in a loss of control of the vehicle, serious injury and/or death.]**



FRONT WHEEL AND THRU AXLE INSTALLATION

1. **⚠ [WARNING: Do not lubricate Trust Performance fork axle parts.]**

2. **⚠ [WARNING: Never use any tool other than a torque wrench to tighten the thru axle onto the front suspension. Under or over torquing may cause damage or loosening of the thru axle while riding, resulting in serious injury and/or death.]**

3. The Trust Performance front suspension is designed to adapt two different types of front hub. Using the horseshoe adapter, use

only with a 15x110 "Boost" front hub, which is identified by 21mm diameter axle caps. Without the horseshoe adapter, use only with a 15x110 "Torque Cap" hub, which is identified by 31mm diameter axle caps.

4. Install the front wheel into the dropouts by sliding the wheel past the shock link, vertically into the dropout hood.

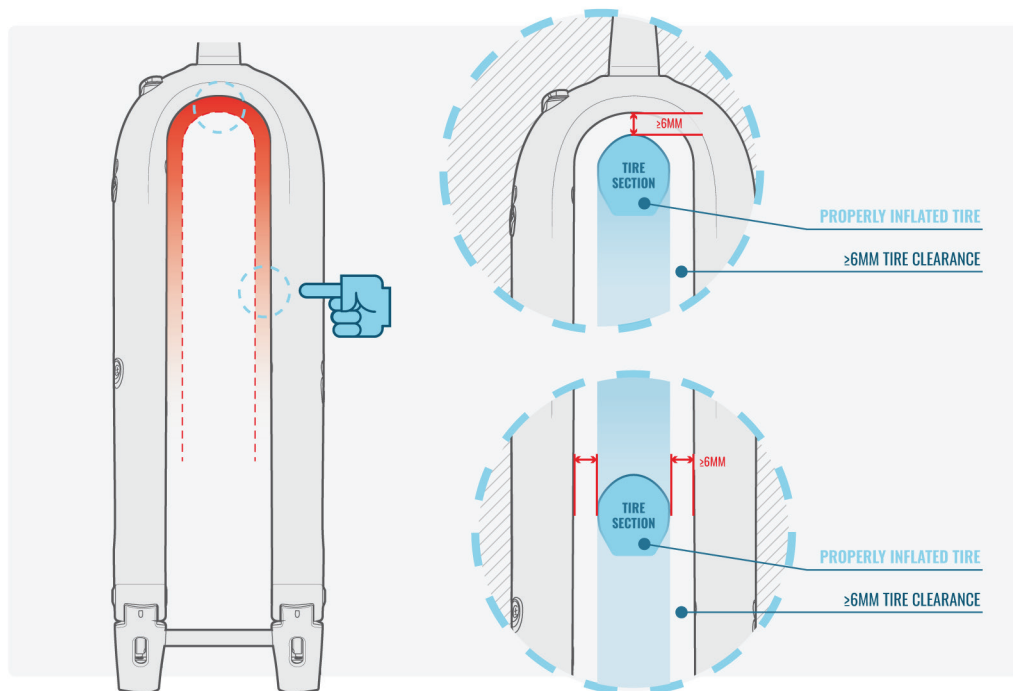
5. Slide the thru axle through the non-drive side of the dropouts and the hub.

⚠ Complete a pre-ride inspection after installation to ensure front suspension is in proper working order.

FRONT SUSPENSION INSTALLATION

TIRE CLEARANCE VERIFICATION

1. Inflate the front tire.
2. Trust Performance front suspension includes two air springs, one in each leg of the frame, and each with independent main air chambers. Release all air pressure from both of the main air chambers.
3. Compress the suspension completely, being careful to make sure that the bottom out bumpers are fully compressed.
4. Measure the distance between the top of the inflated tire and the bottom of the crown, and the widest part of the sides of the inflated tire and the inside of the legs and crown. There must be at least 6mm of clearance at all points.
5. Warning: Failure to leave at least 6mm of clearance between the crown and the highest point on the tire at full bottom out, and the widest part of the sides of the inflated tire and the inside of the legs and crown will not allow the front wheel to rotate freely during use, which can result in serious injury or death.



FRONT SUSPENSION INSTALLATION

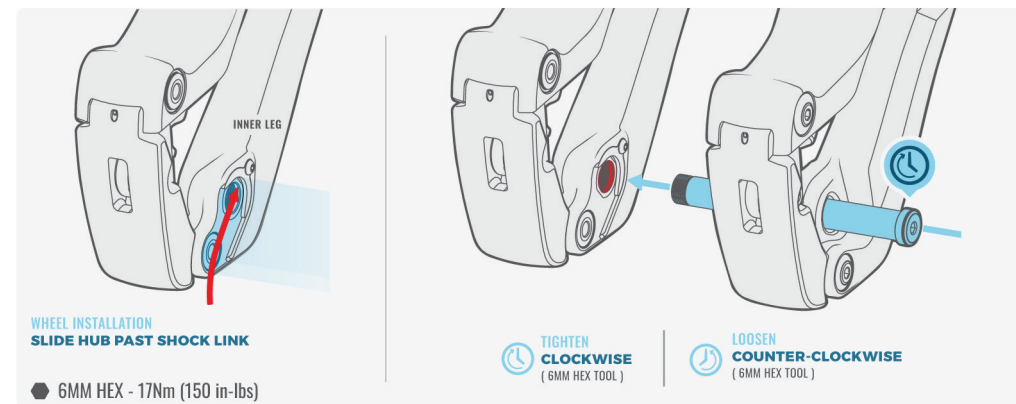
TIRE CLEARANCE VERIFICATION

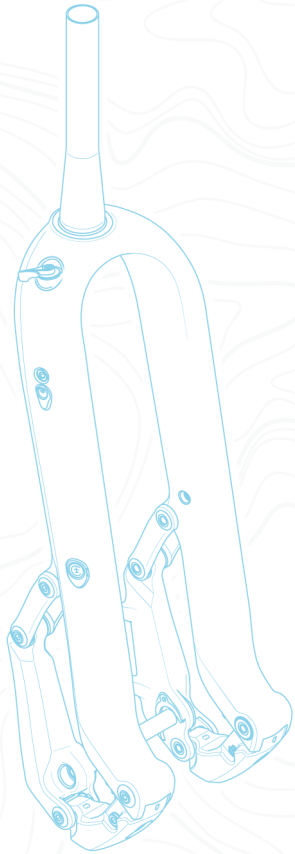
6. The tire size chart shows the recommended maximum tire sizes to be used with your Trust Performance front suspension. Tire sizes vary greatly from varying manufacturers. Always perform the Tire Clearance Verification procedure any time that you fit a new tire to your Trust Performance front suspension to verify that there is at least 6mm of clearance at all points.

PRODUCT	CLASS	TIRE FIT SPEC	INDUSTRY TIRE SPECIFICATION			
			"29 INCH"	"27.5+"	"27.5 INCH"	"26+"
			THEORETICAL MAX TIRE SIZE OD(mm) X WIDTH(mm)			
MESSAGE	CLASS A	29, 27.5+, 27.5, 26+	762x66	744x78	744x78	744x78
	CLASS B	27.5+/26+	NO FIT	NO FIT	744x66	726x78
	CLASS C	29 MAX	762x66	NO FIT	NO FIT	NO FIT
	CLASS D	27.5 MAX	NO FIT	NO FIT	744x66	NO FIT

MAXIMUM AIR PRESSURE

- Do not exceed the maximum air pressure of 300PSI.
- Do not use less than the minimum air pressure of 100PSI.





MAINTENANCE AND SETUP

MAINTENANCE AND SETUP

CLEANING

1. Clean your Trust Performance front suspension after every ride to extend your product's lifespan, make it easier to detect any issues, and for style.
2. Never spray pressurized water directly at the product and never use anything with more water pressure than a garden hose. Never use a pressure washer.
3. When things get grimy, unscented mild dish soap can be diluted in water and used with a soft rag.
4. To best maintain the performance and durability of your product under normal use, Trust recommends that you have regular maintenance performed according to the service intervals listed below.

5. For those who ride lift-accessed downhill/bikepark/freeride or in extremely wet/muddy or dry/dusty environmental conditions where trail debris is sprayed onto the suspension while riding, Trust Performance encourages riders to perform maintenance earlier than recommended as needed. If you hear, see, or feel something unusual, stop riding immediately and contact a Trust Authorized Service Center for proper servicing.
6. More frequent care and service can result in improved suspension performance.

SERVICE HOURS INTERVAL	MAINTENANCE	BENEFIT
EVERY RIDE	CLEAN DIRT FROM SHAFT AREA, INSPECT FOR VISUAL DAMAGE AND FUNCTION OF CONTROLS, INSPECT ALL	EXTENDS WIPER SEAL LIFESPAN
		MINIMIZES DAMAGE TO SHAFT
		MINIMIZES AIR CAN CONTAMINATION
REGULARLY	RE-TORQUE ALL PIVOTS	KEEPS SUSPENSION RUNNING SMOOTHLY
EVERY 50 HOURS	PERFORM AIR CAN SERVICE	REDUCES FRICTION
		RESTORES SMALL BUMP SENSITIVITY
EVERY 250 HOURS OR 18 MONTHS, WHICHEVER COMES FIRST	PERFORM COMPLETE DAMPER AND SPRING REBUILD	EXTENDS SUSPENSION LIFESPAN
		RESTORES DAMPING PERFORMANCE

MAINTENANCE AND SETUP

AIR SPRING FILL PROCEDURE

1. **⚠ WARNING:** Never attempt to pull apart, open, disassemble, or service a Trust Performance shock that is in a “stuck down” condition. A “stuck down” condition results from a failure of the dynamic air seal (located between the positive and negative air chambers), resulting with the negative chamber retaining a higher pressure than the positive chamber. To test whether the shock is in fact “stuck down”:

1. Remove the air cap and depress the Schrader valve, to completely release air pressure from the positive chamber of the shock.

2. If the shock body retracts into the air sleeve near bottom-out after the air is released from the positive chamber, attach a Trust high pressure pump and pressurize the shock to 250PSI (17 bar).

3. If the shock does not fully extend, it is in a “stuck down” condition.

4. Any attempt to service Trust Performance air shocks in the “stuck down” condition may lead to serious injury or death. Contact Trust Performance or an Authorized Service Center for repair.

2. For our rider’s convenience, Trust Performance supplies a modern long valve GIYO brand shock pump with many of its aftermarket products.

⚠ [WARNING: Trust suspension air chambers are designed to be filled with air and measured in PSI on a long valve shock pump. Never use an old style short valve type pump

to fill your Trust suspension. The short valve pump might damage the legs structure or may not fully engage the air fill valve, causing issues that might result in a loss of control of the vehicle, and serious injury or death.]



3. Trust Performance front suspension is designed to be set up with 20% sag. We tried to make spring setup easy for you, so your air fill (PSI) to achieve 20% sag is the same as your weight in lbs.



4. Determine your air fill pressure (PSI) by weighing yourself on a scale measuring lbs. Make sure to weigh yourself in ready-to-ride condition, including shoes, packs, any other riding gear. After you weigh yourself, write down your weight in lbs.

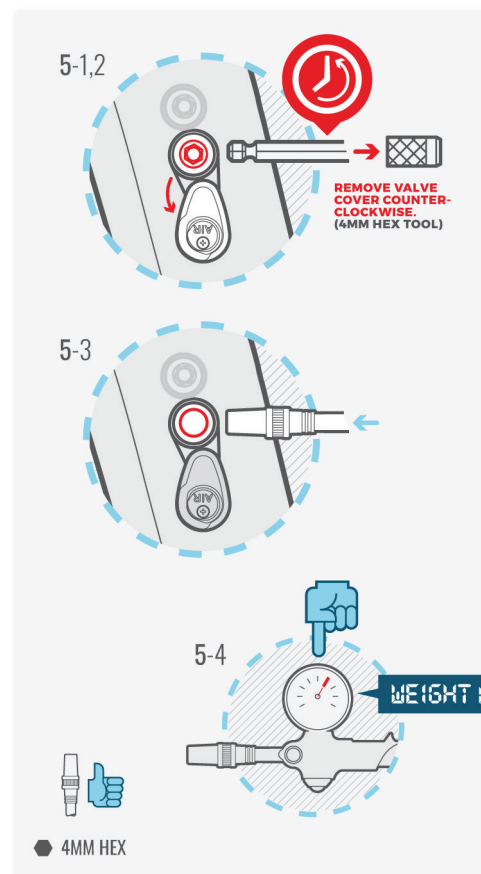
5. Filling your right and left air springs –

1. Open the 1st side air door to expose the air fill valve.

MAINTENANCE AND SETUP

AIR SPRING FILL PROCEDURE

2. Remove the air cap using a 4mm hex wrench by turning the cap counterclockwise.



3. Screw your long valve shock pump onto the Schrader valve by turning the shock pump valve clockwise until the gage

registers, then continue turning the valve ¼ to ½ turn.

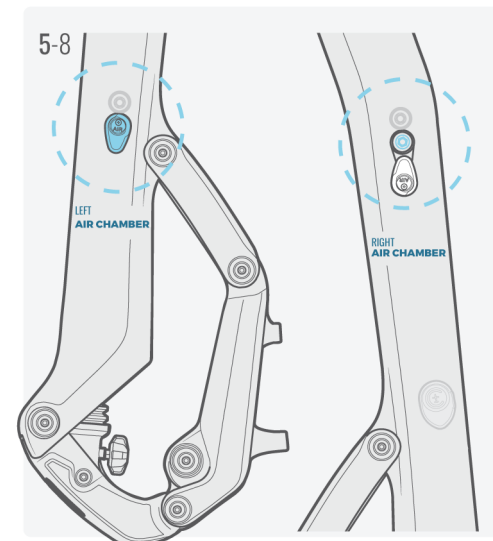
4. Fill your air spring with air until the shock pump registers the same PSI as your body weight in lbs.

5. Remove your long valve shock pump by turning the shock pump valve counterclockwise.

6. Attach the air cap using a 4mm hex wrench by turning the cap clockwise until lightly snug.

7. Close the right air door to cover the air fill valve.

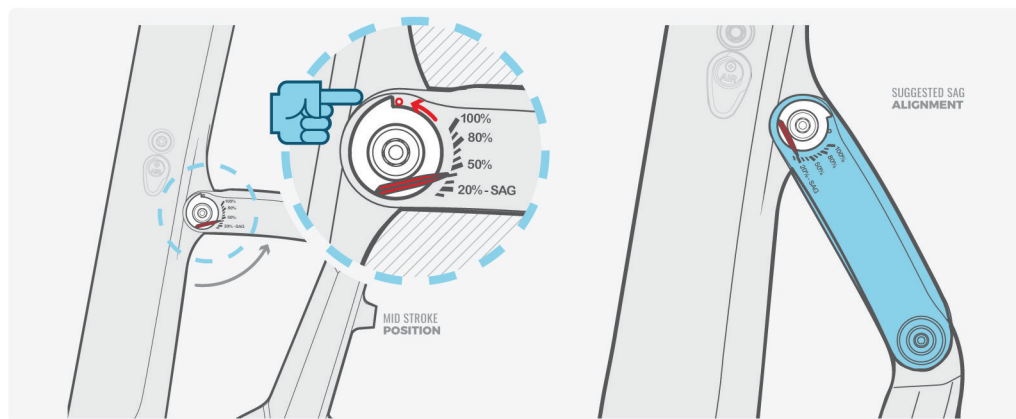
8. Repeat procedure on the 2nd side to complete both right and left air spring filling.



MAINTENANCE AND SETUP

TRAVEL INDICATOR

1. A travel indicator is included as a feature on your Trust Performance front suspension. The travel indicator is a useful tool for generally determining sag setup, and maximum travel used.
2. With the suspension at full extension, zero the travel indicator by lightly rotating it counterclockwise until it stops against the setting pin.
3. Compress the suspension to the desired amount, either as part of sag setup or riding.
4. With the suspension again at full extension, read the maximum suspension compression amount by viewing the indicated percent compression. 0% equals zero travel used, 100% equals 100% travel used.



PIVOT REMOVAL AND INSTALLATION

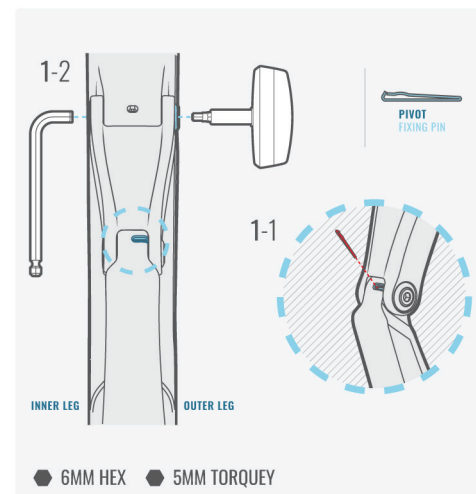
1. Suspension Pivot Removal

1. Locate the pivot fixing pin for the pivot that you would like to remove. Using a plastic pick, remove the pivot fixing pin by sliding it out of its hole.
2. With weight removed from the wheel, remove the pivot by inserting a 6mm hex wrench into the wheel side of the pivot

axle, and a 5mm hex wrench into the outer side of the pivot cap. Rotate the 5mm hex wrench counterclockwise to remove the pivot cap.

3. Push the pivot axle out of its journal.

PIVOT REMOVAL AND INSTALLATION



2. Suspension Pivot Installation

1. With weight removed from the wheel, line up the journals of the two links that you would like to connect, and install the pivot by pushing the pivot axle into its journal from the wheel side (inside) of the linkage.

2. Insert a 6mm hex wrench into the wheel side of the pivot axle, and a 5mm hex torque wrench into the outer side of the pivot cap. Torque the pivot cap to 8Nm in a clockwise direction.

3. Re-install the pivot fixing pin by pushing the pin into its hole so that the tab aligns with its slot, until the pin bottoms out.

3. Shock/Spring Pivot Removal

1. With weight removed from the wheel,

remove the shock/spring pivot by inserting a 5mm hex wrench into the pivot, and rotate the 5mm hex wrench counterclockwise to remove the pivot.

2. Once the pivot is free from its threads, pull the pivot axle out of its journal.

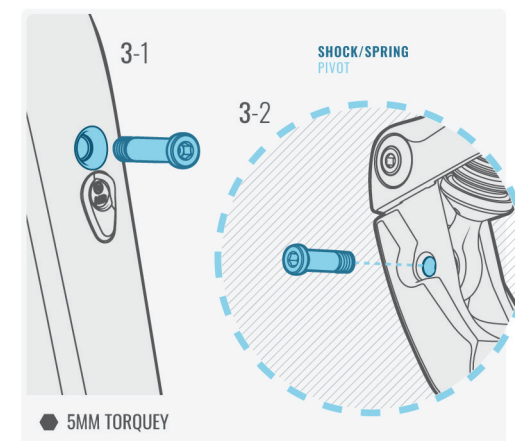
4. Shock/Spring Pivot Installation

1. With weight removed from the wheel, line up the journals of the shock/spring and link/leg that you would like to connect.

2. For lower shock/spring pivot connections, be sure that the slot in the eyelet is installed towards the wheel (inside) and that the eyelet is centered in the window in the shock link.

3. Install the shock/spring pivot by pushing the pivot axle into its journal from the outside of the linkage.

4. Insert a 5mm hex torque wrench into the pivot. Torque the pivot cap to 8Nm in a clockwise direction.



MAINTENANCE AND SETUP

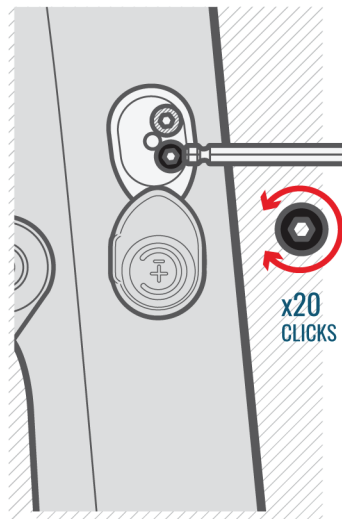
⚠️ SET ADJUSTER TO “0” (FULLY CLOCKWISE) TO START TUNING PROCESS

FASTEST REBOUND & SOFTER SPRING | **EXPERIMENT WITH +/- 2 FINE TUNING CLICKS*** | **SLOWEST REBOUND & SLOWEST SPRING**

-20 CLICKS = FULL OPEN | **0 CLICKS = FULL CLOSED**

OPEN MODE ADJUST	
AIR PRESSURE (PSI) - BODY WEIGHT (LBS)	
PSI / LBS	CLICKS OUT
MAX 300	0/ IN
290	-1
280	-2
270	-3
260	-4
250	-5
240	-6
230	-7
220	-8
210	-9

PSI / LBS	CLICKS OUT
200	-10
190	-11
180	-12
170	-13
160	-14
150	-15
140	-16
130	-17
120	-18
110	-19
100	-20/ OUT
>100	-20/ OUT



MAINTENANCE AND SETUP

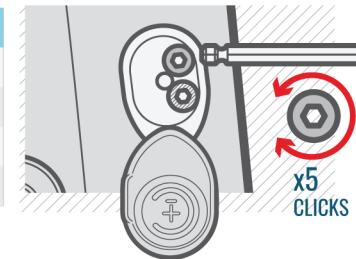
⚠️ SET ADJUSTER TO “0” (FULLY CLOCKWISE) TO START TUNING PROCESS

LESS LOW SPEED COMPRESSION (SOFT) | **EXPERIMENT WITH +/- 1 FINE TUNING CLICKS*** | **MORE LOW SPEED COMPRESSION (FIRM)**

-5 CLICKS = FULL OPEN | **0 CLICKS = FULL CLOSED**

MEDIUM MODE ADJUST	
SET BY BODY WEIGHT	
WEIGHT LBS	CLICKS OUT
300	0/ IN
260	-1

WEIGHT LBS	CLICKS OUT
220LBS	-2
180LBS	-3
140LBS	-4
100 & LESS	-5/ OUT



PRE-FLIGHT TUNING SETTINGS ARE MEANT AS A REFERENCE POINT, **YOUR SETTINGS** MAY DIFFER.

trust TECHTIP

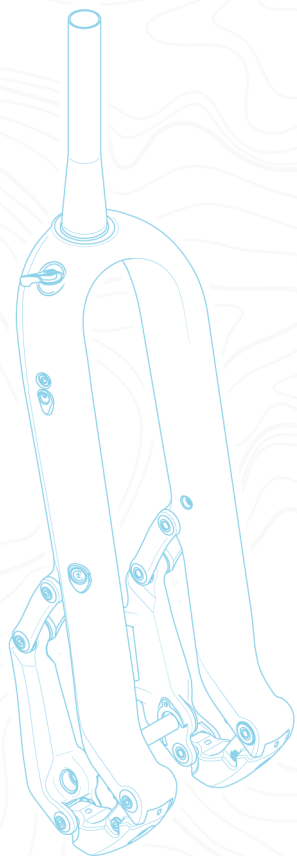
OPEN & MEDIUM ADJUSTMENT PORT x2

3MM HEX TOOL

trust TECHTIP

AIR CHAMBER PORT COVER x2

MODE ADJUST PORT COVER x1



WARRANTY

LIMITED WARRANTY

Trust Performance warrants its products to be free from defects in materials or workmanship for a period of two (2) years after original purchase. This warranty only applies to the original owner and is not transferable. To confirm that you are the original owner, please register using our product registration form at the time of purchase. Claims under this warranty must be made through the dealer from whom the product was purchased.

LIFETIME BEARING WARRANTY

Trust Performance pivot bearings are warranted for life to the original owner of the product.

LIFETIME NO-FAULT REPLACEMENT

Trust Performance will at its own discretion, make replacement structure parts available to the original owner at a minimal charge in the event of a crash or other non-warranty situation for the life of the product.

LOCAL LAW

Trust Performance's warranty is governed under the laws of the state of Utah. This warranty statement gives the customer specific legal rights. The customer may also have other rights which vary from state to state (USA), from province to province (Canada), and from country to country elsewhere in the world.

To the extent that this warranty statement is inconsistent with the local law, this warranty shall be deemed modified to be consistent with such law, under such local law, certain disclaimers and limitations of this warranty statement may apply to the customer. For example, some states in the United States of America, as well as some governments outside of the United States (including provinces in Canada) may:

- a. Preclude the disclaimers and limitations of this warranty statement from limiting the statutory rights of the consumer (e.g. United Kingdom).
- b. Otherwise restrict the ability of a manufacturer to enforce such disclaimers or limitations.

WARRANTY

LOCAL LAW (CONT)

For Australian customers:

This Trust Performance limited warranty is provided in Australia by Trust Performance, 336 West 700 South, Ste A, Salt Lake City, UT 84101, USA. To make a warranty claim please contact the dealer from whom you purchased this Trust Performance product. For valid claims Trust Performance will, at its option, either repair or replace your product.

Any expenses incurred in making the warranty claim are your responsibility. The benefits given by this warranty are additional to other rights and remedies that you may have under laws relating to our products. Our goods come with guarantees that cannot be excluded under the Australian Consumer Law. You are entitled to a replacement or refund for a major failure and for compensation for any other reasonably foreseeable loss or damage. You are also entitled to have the goods repaired or replaced if the goods fail to be of acceptable quality and the failure does not amount to a major failure.

LIMITATIONS OF LIABILITY

IN NO EVENT SHALL TRUST PERFORMANCE BE LIABLE FOR DIRECT, INDIRECT, SPECIAL, INCIDENTAL, OR CONSEQUENTIAL DAMAGES ARISING OUT OF, RELATED TO OR IN CONNECTION WITH THE LIMITED WARRANTY NOTED HEREIN.

THE REMEDIES DESCRIBED HEREIN ARE THE CONSUMER'S SOLE AND EXCLUSIVE REMEDIES AND TRUST PERFORMANCE'S ENTIRE LIABILITY FOR ANY BREACH OF THIS LIMITED WARRANTY. TRUST PERFORMANCE'S LIABILITY SHALL UNDER NO CIRCUMSTANCES EXCEED THE ACTUAL AMOUNT PAID BY THE CONSUMER FOR THE PRODUCT.

SOME STATES DO NOT ALLOW THE EXCLUSION OR LIMITATION OF INCIDENTAL OR CONSEQUENTIAL DAMAGES, SO THE ABOVE LIMITATION OR EXCLUSION MAY NOT APPLY.

LIMITATIONS OF WARRANTY

This limited warranty does not cover: (a) any damage due to incorrect installation and/or adjustment according to the respective Trust Performance user manual (the Trust Performance user manuals can be found online at TrustPerformance.com); (b) transportation or storage of the product; (c) damage to the product caused by a crash, impact, abuse of the product, non-

WARRANTY

compliance with manufacturers specifications of usage; (d) improper use outside ASTM riding guidelines, or any other circumstances in which the product has been subjected to forces or loads beyond its intended design; (e) product that has been modified, including, but not limited to any attempt to open or repair any electronic and electronic related components; (f) products where the serial number or production code has been deliberately altered, defaced or removed; (g) products purchased from unauthorized Trust Performance dealers; (h) damages caused by the use of parts that are not compatible, suitable and/or authorized by Trust Performance for use with Trust Performance components; and (i) damages resulting from rental or demo use.

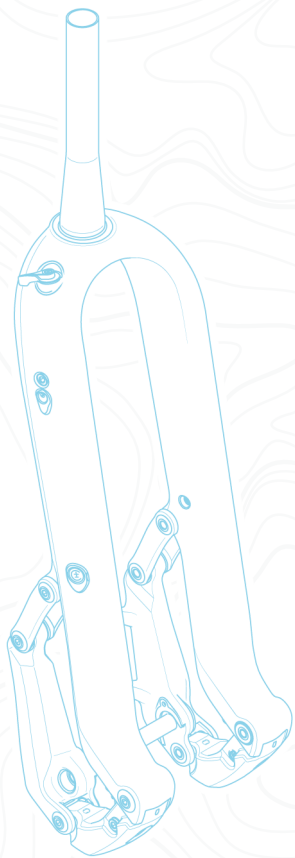
EXCEPT AS DESCRIBED HEREIN, TRUST PERFORMANCE MAKES NO OTHER WARRANTIES, GUARANTIES, OR REPRESENTATIONS OF ANY TYPE (EXPRESS OR IMPLIED), AND ALL WARRANTIES (INCLUDING ANY IMPLIED WARRANTIES OF REASONABLE CARE, MERCHANTABILITY, OR FITNESS FOR A PARTICULAR PURPOSE) ARE HEREBY DISCLAIMED.

This warranty does not apply to normal wear and tear. Wear and tear parts are subject to damage as a result of normal use, failure to service according to Trust Performance recommendations and/or riding or installation in conditions or applications other than recommended.

Wear and tear parts are identified as:

Dust seals; Air can and piston seals; Damper seals; Seals, o-rings, and quad rings; Pivot seals; Stripped or deformed tool interfaces including pivot hardware; Glide rings, backup rings, and piston bands; Rubber moving parts; Foam rings; Bushings; Shock mounting hardware; Bottomout pads and bumpers; Topout pads and bumpers; Tools; Batteries ; Stripped threads/ bolts (aluminum, titanium, magnesium, or steel) ; Threadlocker; Corrosion





日本語

警告

警告

- 自転車に乗ることは本質的に危険を伴います。自転車とその構成部品を適切に保守、点検していないと更に危険性は高くなり、重症または死に至る可能性があります。
- フロントサスペンションを設置するには、特殊工具、用具、知識が必要です。Trust Performance 製品は、有資格整備士のみが設置することができます。お近くの有資格整備士、Trust Performance認定サービスセンターを確認するには、Trust Performanceにお問い合わせください。
- これらの指示外で製品を改造しないでください。重症、死亡及び/または限定保証を無効とする事態を引き起こす可能性があります。
- 自転車の製品寿命は有限的です。Trust Performance製品の乗車、保管、維持方法は、その寿命に影響します。Trust Performanceサスペンションと他のすべてのライディング機器は、メーカーの指示に従って、走行する前に点検するようにしてください。部品に疲労、磨耗または損傷の兆候がある場合は、検査および/または交換ができるまでは乗らないでください。
- Trust Performance サスペンションは、お一人乗車用、電動でないマウンテンバイク、最大出力が250Wの電動マウンテンバイク用に設計されており、30kg未満の乗車用、最大速度は40kph、つまりAll Mountain and XC Riding に適切です。(詳しくは以下”使用目的”を参照)

- ステアリングチューブに指で触れるくぼみがある場合、クラウン/ステアラーチューブアセンブリを交換する必要があります。欠けや摩耗があると、ステアリングチューブが破損し、自転車の制御が失われ、重症や死亡に至る可能性があります。フロントサスペンションの修理には、Trust Performance推奨の交換部品のみを使用してください。
- Trust Performanceフロントサスペンションのサービスには、Trust Performance 認定サービスセンターのみを使用してください。不適切なメンテナンスは、保証を無効にし、フロントサスペンションを誤動作させ、重傷や死亡事故を招く可能性があります。
- Trust Performanceフロントサスペンション、またはフロントサスペンションと整合する製品を調整または設置するときは、インタフェースの汚染を避けるために、故障、重傷および/または死亡の原因となる可能性があるため、常に表面を清潔に保ってください。
- サスペンションには空気と加圧流体が入っています。Trust Performanceフロントサスペンションの一部を開けたり、分解したりしないでください。
- 乗車するときは常にヘルメットを着用してください。乗車スタイル、能力、または条件が、指示にある場合は、追加保護装置を着用してください。丁寧に利用するようにし、常に、乗車地域の規則に従ってください。

警告

- Trust Performanceフロントサスペンションと設定が、お客様のフレーム、サイズ、乗車スタイル、および乗車条件に適していることを確認してください。これらの要因を考慮しないと、自転車の特性が、危険な状態になる可能性があります。
- サグインジケータ、空気圧チャート、およびダンパーセットアップの表示は参考用です。安全に使用するには、フレームとフロントサスペンションに、少なくとも6mmのタイヤ間隔を、完全な圧縮距離があることを確認してください。
- 自転車は部品の合体物です。それらの組み立てを理解し、適切に組み立てられていることを確認します。
- このマニュアルは、自転車の組み立て、メンテナンス、乗車のための包括的ガイドではありません。
- TrustサスペンションにTrust Performanceの承認備品以外は取り付けしないでください。
- Trust Performanceサスペンションが常に物体に接触する場合、目視検査手順を繰り返してください。
- Trustサスペンションには、道路上、バイク道路、または他人が目視する必要のある都市部での乗車条件に使用するライトまたはリフレクターは付属していません。
- タンデム自転車や重量のある自転車など、複数ライダーが乗っている車両には、Trust Performanceサスペンション製品を使用しないでください。

- フォーク車軸の開口部に汚れやゴミが溜まりやすいため、車輪を取り付ける前に必ずこの部分を点検して清掃してください。不適切なハブと車軸の設置は、重大なけがや死に至る可能性があります。
- 注意: 汚れたポンプまたはバルブエンドは、汚染、損傷、および空気汚染を引き起こす可能性があります。ポンプとバルブは取り付け前に清潔であることを確認してください。
- Trust Performanceサスペンションはボールベアリングとジャーナルベアリングピボットを使用します。ピボットで通常動作以外の事態、拘束されたりする状態が発生した場合は、すぐに製品の使用を中止し、訓練された専門整備士に相談してください。破損したピボットは、自転車の制御を失い、重傷事故をひきおこす可能性があります。
- Trust Performanceサスペンションは、サスペンションピボット用に独自のピボット固定ピンを使用します。ピボット固定ピンは、ピボット保持セキュリティを上位レベルにすることを目的としています。ピボット固定ピンが正しく取り付けられていない状態で、Trust Performanceサスペンションに乗らないでください。ピボット固定ピンを使用しないと、ピボットが故障し、車輪が詰まって、自転車の制御が失われたり、重傷を負う可能性があります。

警告

- ピボットおよびショックボルトを8Nm仕様に合わせないと、乗車中にサスペンションコンポーネントが分離し、自転車の制御が失われたり、重傷を負う可能性があります。
- パフォーマンスサスペンションは、相互接続するサスペンションピボットと、衝撃やバネをリンクやレグに接続す

るショック/スプリングピボットを使用します。サスペンションピボットとショック/スプリングピボットのメンテナンス手順は異なります。ピボットスタイルごとに適切なガイドラインに従わないと、ピボットが故障し、ホイールが詰まったり、自転車の制御が失われたり、重傷を負う可能性があります。



[!これらの警告に従わないと、重傷、死亡、またはTrust Performanceサスペンションへの損害を引き起こす可能性があります。!]

限定的補償

限定的補償

Trust Performanceは、購入後(2)年間、製品材料または製造上の欠陥がないことを保証します。この保証は元の所有者にのみ適用され、譲渡することはできません。あなたが元の所有者であることを証明するには、購入時に当社の製品登録フォームを使用して登録してください。この保証に基づくクレームは、製品を購入した販売店を通じて行わなければなりません。

製品寿命ベアリング保証

Trust Performanceのピボットベアリングは、製品の所有者に保証されます。

製品寿命無過失交換

Trust Performanceは、自らの裁量により、製品寿命間において、故障または保証外の状況が発生した場合、所有者が最小限の費用で部品交換できるように務める。

現地法Local Law

信頼性パフォーマンスの保証は、ユタ州法に準拠します。本保証書は、顧客に特定の法的権利を与えるものとなります。また、お客様は州(アメリカ/カナダ)ごと、世界各地の国ごとに異なる権利を持つことがあります。

この保証書が現地法と矛盾している限り、この保証は、現地の法律に準拠するように変更されたものとみなされ、この保証書の特定免責事項および制限がお客様に適用されることがあります。たとえば、米国内の一部の州だけでなく、米国以外の一部の国(カナダの州を含む)は:

- a. この保証条項の免責事項および制限が、消費者(例えば、英国)の法的権利を制限することを妨げます。
- b. そうでない場合は、メーカーがそのような免責事項や制限を実施する能力を制限します。

限定的補償

現地法Local Law

オーストラリア圏のお客様においては:

このTrust Performance限定保証は、米国、336 West 700 South, Ste A, Salt Lake City, UT 84101にあるTrust Performanceによりオーストラリアで提供されます。保証請求を行うにはTrust Performance製品を購入したディーラーにお問い合わせください。有効な請求についてTrust Performanceは、オプションで、お客様の製品を修理または交換します。保証請求の際に発生した費用は、お客様の責任であるものとします。この保証によって与えられる権利は、当社製品に関する法律に基づくその他の権利および救済手段に追加されます。当社商品には、オーストラリアの消費者法では排除できない保証が付いています。あなたは、重大な過失や合理的に予見可能なその他の損失や損害に対する補償に対して、交換または払い戻しを受ける権利があります。また、商品品質に問題がある、故障が重大な欠陥になる場合は、商品の修理または交換を受ける権利があります。

限定的保証

いかなる場合でもTrust Performanceは、ここに記載される限定的保証に関連して発生した、またはこれに関連する、直接的、間接的、偶発的、必然的な損害に対して責任を負いません。

ここに記載されている救済措置は、消費者の唯一の排他的救済措置であり、Trust Performanceの限定的保証の不履行に対する履行義務全体の責任を説明します。実績のTrust Performanceの責任は、消費者が製品に対して支払った実際の金額を超えてはなりません。THE REMEDIES DESCRIBED HEREIN ARE THE CONSUMER'S SOLE AND EXCLUSIVE REMEDIES AND TRUST PERFORMANCE'S ENTIRE LIABILITY FOR ANY BREACH OF THIS LIMITED WARRANTY.

一部の州では、偶発的または必然的な損害に対して、除外または制限を認めていないため、上記の制限/除外が適用されないことがあります。

限定的補償

保証の制限

この限定保証は、(a)各Trust Performanceユーザーマニュアル(Trust Performanceユーザーマニュアルは、オンライン上、Trust Performance.comで確認できます) に則った場合に、不適切なインストールおよび/または調整によって生じた損害、(b)製品の輸送または保管によって、(c)クラッシュ、衝撃、製品の乱用、製造者の使用仕様の不適合に起因する製品損傷、(d)ASTMライディングガイドライン外での不適切な使用、または製品が意図された設計を超えて、負荷または荷重を受けた場合、(e)製品を変更した場合(電子関連コンポーネントの開封または修理を含むがこれに限定されない)、(f)シリアル番号または製造コードが意図的に変更、破損または削除された状態、(g)認可されていないTrust Performanceディーラーから購入した製品である場合、(h) Trust Performanceコンポーネントで使用するためにTrust Performanceによって適合および/または許可されていないパーツの使用に起因する場合 (i)レンタルまたはデモの使用に起因する損害は、対象ではない。

ここに記載される場合を除き、Trust Performanceはいかなる種類(明示的または黙示的)の保証、表明も行わず(合理的なケア、商品性、または特定目的に対する適合性の黙示的保証を含む)、全ての補償はここで面積されます。

この保証は、通常の摩耗には適用されません。部品の摩耗や破れは、通常使用の結果として、また、Trust Performanceの推奨方法に従った上でのサービス不具合、推奨条件や用途以外での利用や設置を行う場合に、生じる可能性があります。

摩耗及び裂傷部分:

ダストシール; 空気缶およびピストンシール;ダンパシール; シール、Oリング、クワッドリング、ピボットシール; ピボットハードウェアを含む、剥がれ、変形した表面; グライドリング、バックアップリング、ピストンバンド; ゴム可動部品; フォームリング; プッシュ; ショック取付金具; 底部パッドとバンパー; 上部パッドとバンパー; ツール; バッテリー; 潰れたねじ山/ボルト(アルミニウム、チタン、マグネシウム、または鋼); スレッドロッカー; 腐食



FOR ADDITIONAL INFORMATION VISIT US ONLINE

[TRUSTPERFORMANCE.COM](https://www.trustperformance.com)